

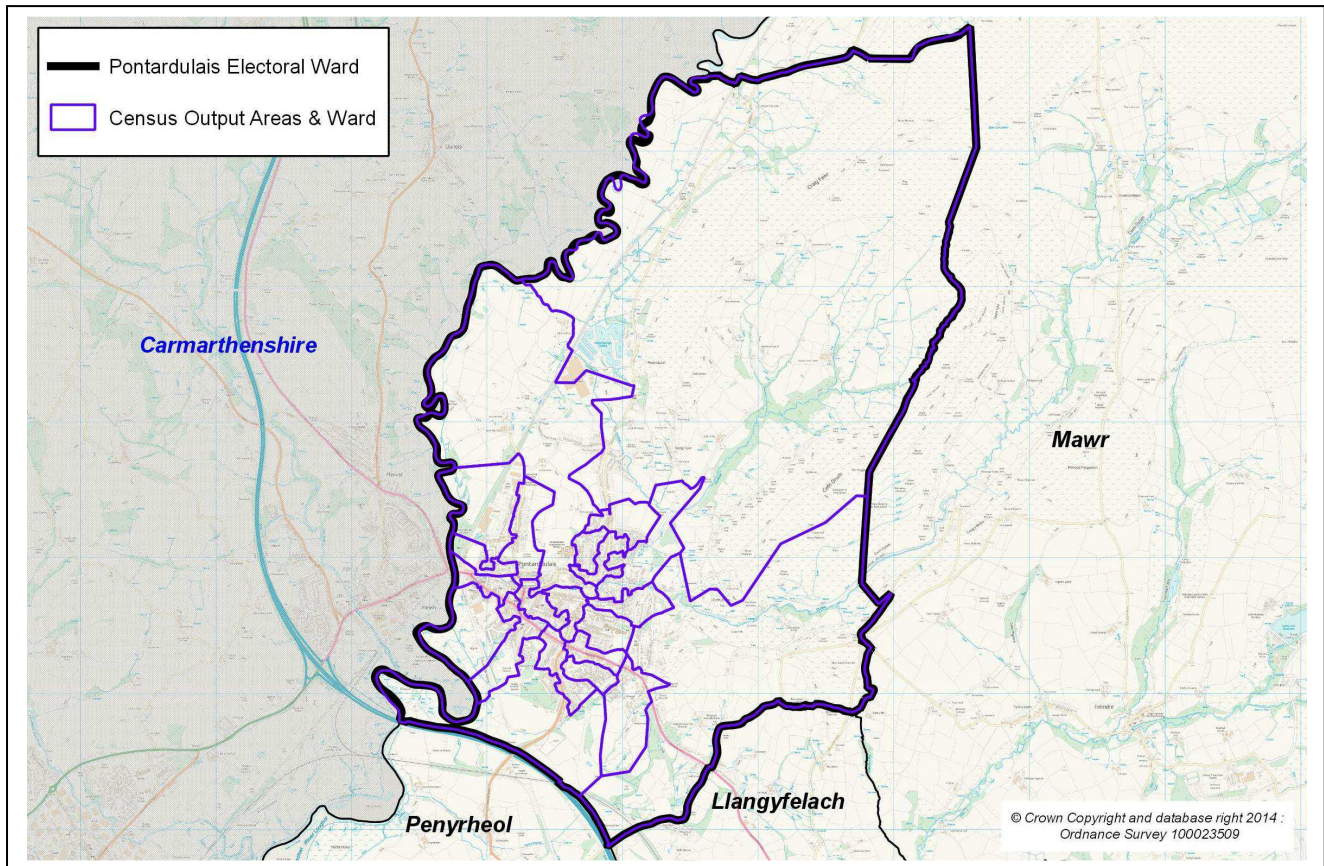
PONTARDDULAIS WARD PROFILE

Information, Research & GIS Team, City and County of Swansea, May 2017

Population: 6,600 (source: mid-2015 estimates, rounded - Office for National Statistics / ONS)

Councillors (Electoral vote, May 2017): Kevin Michael Griffiths (Independent – 832); Philip Downing (Labour – 801). *Turnout* = 25.56%.

Welsh Government and UK Parliamentary Constituency: Gower



- **Location:** Approximately 12 km north west of the city centre
- **Neighbouring Wards (Swansea):** Mawr, Llangyfelach, Penyrheol
- **Regeneration Designations:** Rural Development Plan eligible ward
- **Area:** 1,558 hectares (2011 Census figure) / 15.58 km²
- **Population Density:** 4.0 people per hectare (2011 Census)
- **Population Change (2005 to 2015):** +1,000 / +17% (ONS estimates, rounded)
- **Employment:** 2,000 (ONS workplace estimate, 2015). Major employers: Corus Strip Products UK (Aluminised Products), Macmillan Publishers (Distribution), Tesco, district shopping centre, Pontarddulais Industrial Estate businesses.

Information, Research & GIS Team - City and County of Swansea, May 2017

[Note: Changes have been made to the boundaries of a number of Electoral Divisions or Wards within Swansea as a result of the Swansea (Communities) Order 2011. Most of the statistical information included in this profile, including data from the 2011 Census, relates to the ward as defined prior to the confirmation of the Order.]



© Getmapping PLC – Survey 2013/2014

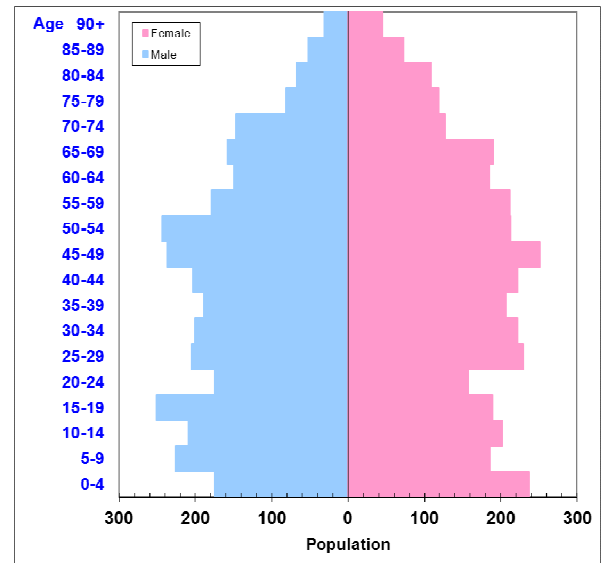
Information, Research & GIS Team - City and County of Swansea, May 2017

[Note: Changes have been made to the boundaries of a number of Electoral Divisions or Wards within Swansea as a result of the Swansea (Communities) Order 2011. Most of the statistical information included in this profile, including data from the 2011 Census, relates to the ward as defined prior to the confirmation of the Order.]

POPULATION STATISTICS

Mid-2015 population estimates

Age Structure	Pontarddulais Population	Pontarddulais %	Swansea %
Aged: 0-4	412	6.3	5.5
5-15	916	14.0	11.7
16-24	678	10.3	14.0
25-44	1,679	25.6	24.7
45-64	1,671	25.5	24.7
65-74	622	9.5	10.4
75+	578	8.8	8.9
Total	6,556	100	100
Male	3,180	48.5	49.9
Female	3,376	51.5	50.1



Source: Small area population estimates (2015), ONS.

- 14th largest ward population in Swansea (of 36), but 7th least densely populated.
- Slightly higher proportions aged 0-15 and 25-44, but lower percentage age 16-24.
- Birth and death rates currently slightly above Swansea averages.
- Pontarddulais has a high proportion of people able to speak Welsh and born in Wales.
- The ward also has a relatively high proportion of couple households.

Births & Deaths	Pontarddulais	Swansea
Births (2014)	78	2,522
Birth Rate	11.9	10.5
Deaths (2014)	66	2,400
Death Rate	10.0	9.9

Source: 2014 Vital Statistics / population estimates, ONS.
Note: Birth and death rates expressed per '000 population (rates produced by CCoS using ONS estimates).

2011 Census Data

Population Characteristics	Pontarddulais	Pontarddulais %	Swansea %
People: born in Wales	5,400	86.0	77.7
born outside UK	153	2.4	7.2
in non-white ethnic groups	92	1.5	6.0
with long-term health problem or disability	1,530	24.4	23.3
with no qualifications (aged 16+)	1,171	23.3	23.9
with higher level qualifications (aged 16+)	1,253	25.0	25.8
able to speak Welsh (aged 3+)	1,910	31.6	11.4

Household Composition	Pontarddulais	Pontarddulais %	Swansea %
Total households / (Average Household Size)	2,661	(2.3)	(2.3)
Household type: One person: Age 65+	356	13.4	13.4
Other	449	16.9	19.9
One family only: All aged 65+	215	8.1	8.7
Married or Same-Sex Civil Partnership Couple	895	33.6	30.4
Cohabiting Couple	276	10.4	8.6
Lone Parent	354	13.3	11.7
Other Household Types	116	4.4	7.3

Source: 2011 Census, ONS.

DEVELOPMENT AND HOUSING

For centuries, Pontarddulais (or 'The Bont' as it is locally known) was a small hamlet built around a crossing point of the River Loughor. The first railway arrived in 1839 to transport anthracite from the Amman Valley to Llanelli, followed in 1866 by another line from Swansea and the Graig Merthyr coal mine in 1867. Heavy industry transformed Pontarddulais into a thriving industrial town, with six tinplate works opening between 1872 and 1910. Substantial population and housing growth followed in the early 20th century, although of course the general 'de-industrialisation' of the area in the post war years is also well documented. Pontarddulais' housing market is closely linked with that of adjoining Hendy (Carmarthenshire), with both benefiting from proximity to the M4 motorway. A selection of typical residential properties currently for sale in the ward, and their sale prices, are shown below:

Tn Y Bonau Road
3 bed mid terrace
£79,950



Clayton Drive
2 bed apartment
£96,000



Ffordd Y Glowr
3 bed semi detached
£145,000

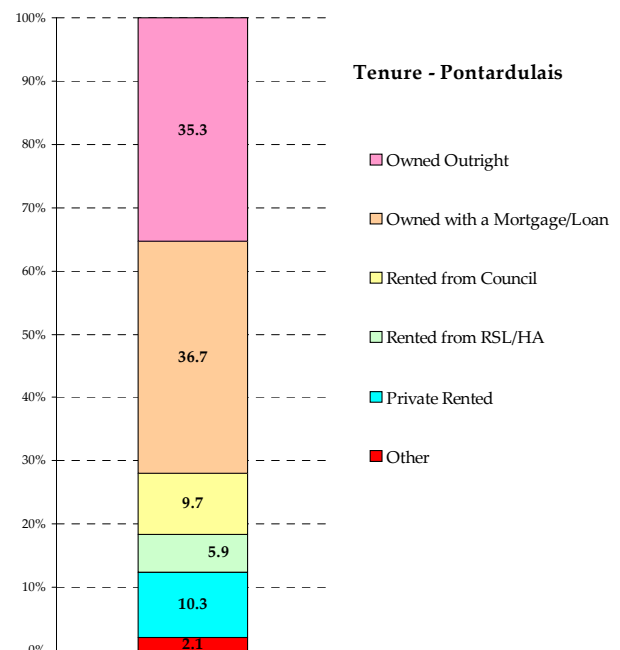
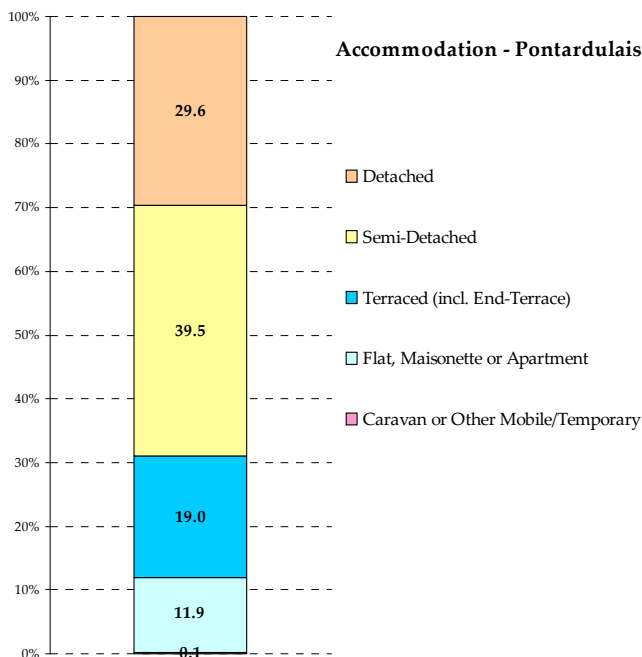


Caecerrig Road
6 bed detached
£239,950



The UK's number one property website. Property photographs and prices were taken from Rightmove, the UK's number one property website, August 2016, and are reproduced with their permission.

Housing Statistics: Accommodation Type and Tenure (Source: 2011 Census, ONS)



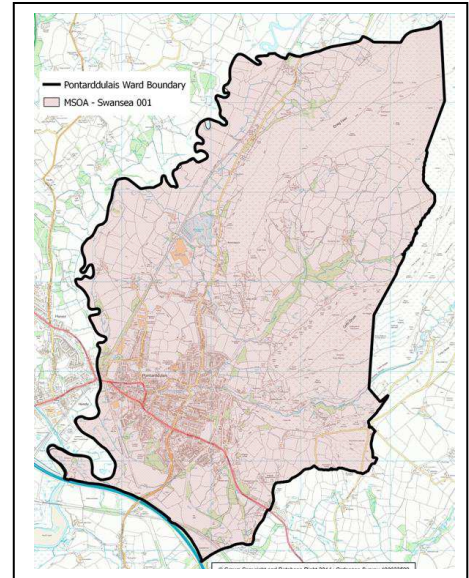
Dwelling Stock by Council Tax Band, March 2015

Council Tax Band:	A	B	C	D	E	F	G	H	I	Total
Pontarddulais	360	800	840	450	320	110	20	10	0	2,880
Pontarddulais %	12.5	27.8	29.2	15.6	11.1	3.8	0.7	0.3	0.0	100
Swansea %	15.1	25.2	21.5	14.8	11.4	7.1	3.4	1.0	0.5	100

Source: Valuation Office Agency (VOA) administrative database. [Note: aggregated, rounded Lower Super Output Area (LSOA) data]

SOCIO-ECONOMIC CHARACTERISTICS

- Estimates of average weekly total household income for Pontarddulais are available via ONS Model-based estimates at MSOA (Middle Super Output Area) level for 2011/12. The figure for Swansea 001, the MSOA which most closely aligns to the ward (see map adjacent), is £553.10; the 13th lowest (of 31 MSOAs) in Swansea and 7% below the Swansea median of £596.32
- NS-SeC data (socio-economic position based on occupation) generally follows Swansea, but indicates an above average proportion of routine and manual occupations (NS-SeC classes 5-7) and fewer people in the 'never worked/not classified' category.



Socio-economic classification (NS-SeC)	Pontarddulais	Pontarddulais %	Swansea %
All usual residents aged 16-74	4,449	100	100
1. Higher managerial, administrative and professional	1,307	29.4	27.5
2. Intermediate occupations	928	20.9	20.3
3. Routine and manual occupations	1,719	38.6	33.9
Never worked and long-term unemployed / Not classified	495	11.1	18.3

Source: NS-SeC – 'National Statistics Socio-economic Classification' (three-class version). 2011 Census, ONS.

ECONOMY AND LABOUR MARKET

- Recent claimant data indicates that unemployment in Pontarddulais is below the Swansea average. Other DWP benefit claimant rates are slightly above Swansea averages. Economic activity and employment rates (2011 Census) are above equivalent Swansea rates.

Benefit Claimants	Pontarddulais	Rate %	Swansea %
Claimant Count unemployment (JSA/UC): Oct-16	60	1.5	2.2
Incapacity Benefits (ESA and IB/SDA): May-16	345	9.6	9.0
Disability Living Allowance: May-16	445	7.7	6.7
Income Support: May-16	95	2.9	2.4
Pension Credit: May-16	230	16.8	16.2
State Pension Claimants: May-16	1,255		

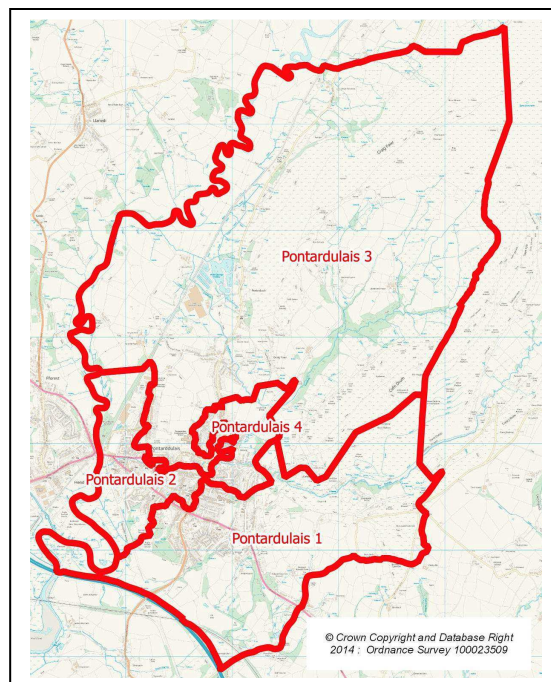
Source: Jobcentre Plus administrative system, Dept for Work and Pensions.

Economic Activity (people aged 16-74)	Pontarddulais	Pontarddulais %	Swansea %
Economically Active	3,053	68.6	63.0
Employees: Part-time and Full-time	2,514	56.5	47.9
Self-employed	260	5.8	6.6
Unemployed	159	3.6	3.9
Economically Inactive	1,396	31.4	37.0
Retired	696	15.6	15.6
Looking after Home or Family	175	3.9	3.7
Long-term Sick or Disabled	275	6.2	6.9
Other	69	1.6	2.1
Students (economically active and inactive)	301	6.8	13.3

Source: 2011 Census, ONS.

WELSH INDEX OF MULTIPLE DEPRIVATION

- WIMD 2014 based on Lower Super Output Area (LSOA) geography – Pontarddulais consists of four LSOAs.
- Pontarddulais 4 is the ward's most deprived LSOA overall (ranking 39th of 148 in Swansea, 455th of 1,909 in Wales). Pontarddulais 1 is the least deprived of the ward's LSOAs.
- The relatively higher deprivation attributed to Pontarddulais 4 is reflected in the education, physical environment and income domains.
- While overall deprivation is lower in the other LSOAs, Pontarddulais 2 and 3 also rank relatively highly in the physical environment domain.



LSOA	Overall index		Domains: Income		Employment		Health		Education		Access to Services		Community Safety		Physical Environment		Housing	
Pon 1	109	1636	117	1636	121	1634	90	1105	97	1468	54	952	104	1381	49	736	116	1621
Pon 2	53	740	53	691	50	670	75	871	56	775	132	1784	54	584	2	67	88	1293
Pon 3	62	872	72	997	64	836	60	667	73	1078	57	995	84	1098	5	125	64	899
Pon 4	39	455	40	381	47	650	33	442	29	328	38	686	91	1176	21	376	62	869

Source: Welsh Index of Multiple Deprivation (WIMD) 2014, including August 2015 revisions, Welsh Government.

Note: LSOAs ranked 1-148 (Swansea), 1-1909 (Wales).

CRIME

The table below indicates the annual number of offences by type taking place within Pontarddulais since 2009/10 together with crime rates per 1,000 population for 2013/14.

Year (1 April - 31 March)	Offence Group									Annual Total
	Burglary	Theft from vehicles	Theft of vehicles	Fraud & forgery	Other theft	Criminal damage	Violence	Drug offence	Other	
2009/10	30	13	8	8	53	89	82	12	13	308
2010/11	50	19	13	7	41	99	77	16	4	326
2011/12	35	20	7	1	58	76	65	10	1	273
2012/13	33	23	11	6	50	61	59	13	4	260
2013/14	17	17	8	0	68	46	77	10	13	256
2013/14: Rate per '000	2.7	2.7	1.3	0.0	10.8	7.3	12.3	1.6	2.1	40.8
Swansea Rate (2013/14)	6.6	5.1	2.5	0.1	18.7	10.7	15.4	3.6	2.1	64.7

Source: Data provided by Business Intelligence Analysts, Western BCU, South Wales Police.

Note: Rates derived from 2011 Census population estimates, ONS.